

Doc. 573.005.052

Modif. Cable (ground)
added.

Date : 10/09/01

Supersede : 22/03/00

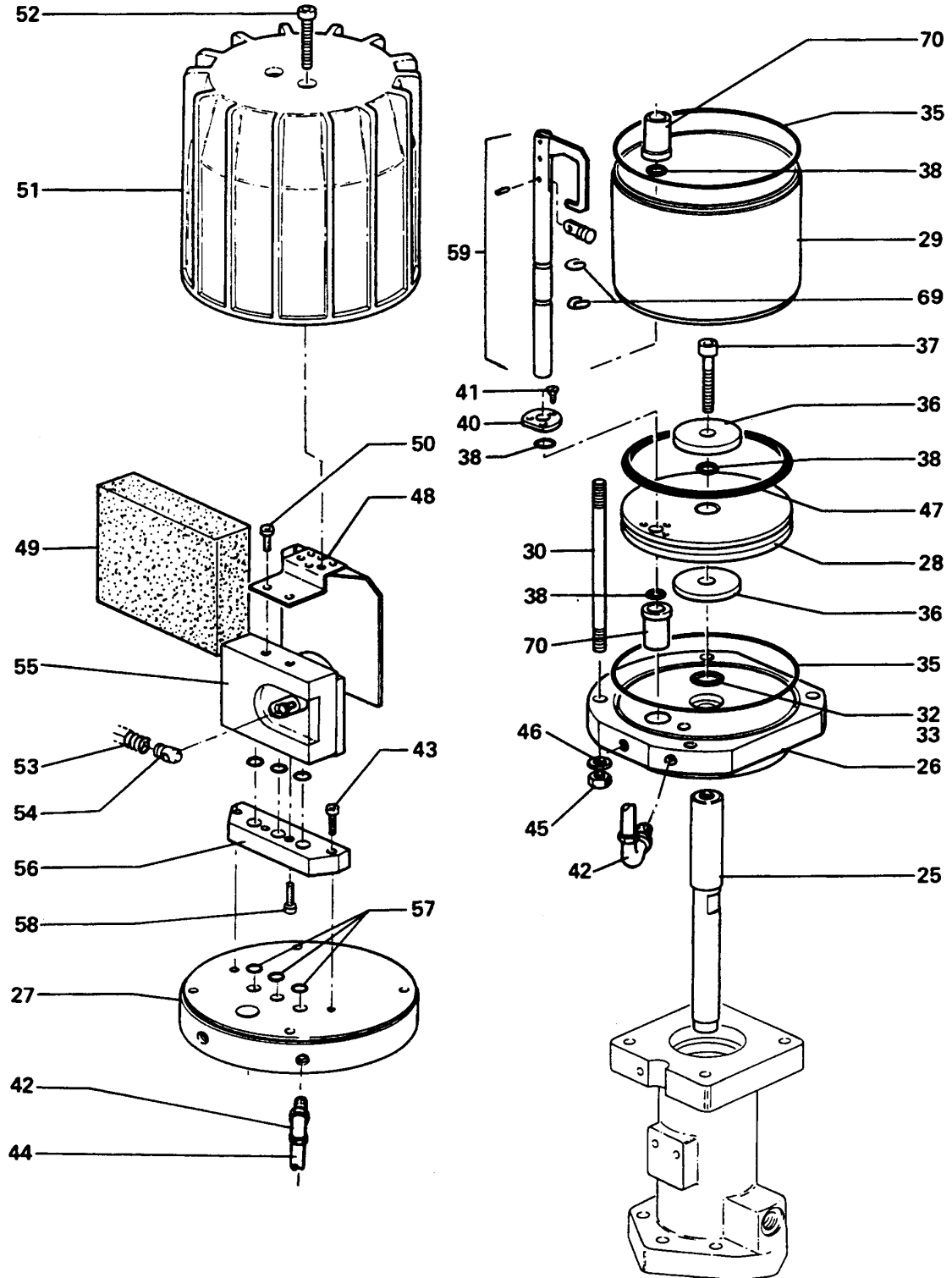


AIR MOTOR

Model 1000-2

Parts list identification

AIR MOTOR - MODEL 1000-2 - P.N° : 144.910.200



PARTS IDENTIFICATION LIST : AIR MOTOR - MODEL 1000-2 - P.N° : 144.910.200

Ind.	Part number	Description	Qty
25	044.910.012	Piston rod	1
26	044.910.208	Lower flange	1
27	044.910.209	Upper flange	1
* 28	044.910.203	Piston	1
* 29	044.910.207	Cylinder	1
30	044.910.017	Tie rod	4
32	144.585.354	O-Ring, Ø 23 / 29/32" (package of 10)	1
33	044.720.016	Ring	1
35	100.940.470	Seal (package of 10)	2
36	044.890.107	Piston thrust	2
37	930.151.502	Screw, CHc, 10 x 40 (M)	1
38	144.579.923	O-Ring (package of 10)	4
40	044.910.204	Bearing	1
41	932.221.166	Screw Hc - 90°, Female - 4 x 12, Male	3
42	905.150.012	Elbow connector, 1/4 (M)	3
43	930.151.446	Screw, CHc, 8 x 35 (M)	2
44	539.310.101	Hose (black) T 8 x 12 (Length : 0,45 m / 18")	1
45	953.010.019	Nut, HM 8	4
46	963.040.019	Washer, MN 8	4
47	909.130.451	Ring	1
48	044.910.205	Support, silencer	1
49	044.910.206	Silencer	1
50	933.011.170	Screw, HM 6 x 12	2
51	044.570.135	Cover	1
52	933.151.387	Screw, CHc, 6 x 30 (M)	2
53	050.311.232	Spring, reversing block	1
54	044.570.131	Link, female	1
* 55	044.630.400	Reversing block assembly (refer to Doc. 573.087.042)	1
56	046.230.005	Base	1
57	909.420.257	O-Ring	3
58	932.151.277	Screw, CHc, 6 x 20 (M)	2
59	044.910.250	Control fork assembly	1
69	902.202.110	Circlips	2
70	044.650.018	Guide ring	2
-	901.180.024	Cable (ground) (Length : 5 m / 196.85")	1
-	963.300.016	Washer	1
-	934.011.196	Screw, H 6 x 16	1
*	144.919.904	Package of seals (ind. 32, 33, 35, 38, 47, 53, 57 + package of seals of the reversing block)	1
*	144.919.914	Servicing kit (ind. 69, 70 + package of seals of the motor + ind. 3, 5, 7, 8, 13 of the reversing block)	1

* Preceding the part number denotes a suggested spare part.

Nota : When ordering a spare part of which the first digit is 5, specify the required length.