

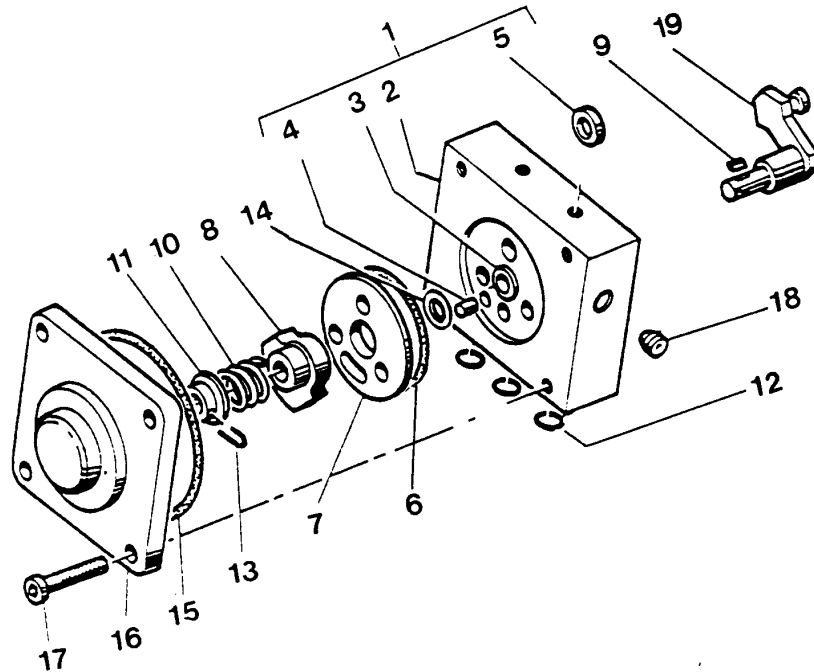


Date : 26/10/00

REVERSING BLOCK

Supersede : 22/03/00 (and Doc.
573.089.052 – 18/05/00)

Parts identification list

REVERSING BLOCK - P.N° : 044.630.400

Ind.	Part number	Description	Qty
1	046.170.501	Block assembly, reversing :	1
2	N S S	• Body	1
3	044.570.402	• Guide ring (glued on part ind. 2 - Loctite IS 496)	1
4	906.070.014	• Pin $\varnothing 4 \times 8 / \varnothing 5/32" \times 5/16"$ Series M	1
5	044.571.102	• Stop (glued on part ind. 2 - Araldite AW 106).	2
6	144.579.912	Gasket seal (package of 10)	1
7	046.170.508	Base, fixed	1
8	044.570.324	Base, mobile	1
9	044.570.325	Pin	1
10	921.140.102	Spring	1
11	044.571.006	Stop, spring	1
12	144.579.922	O-Ring, R 10 (package of 10)	3
* 13	144.579.911	Pin (package of 10 pins + 1 stop ind.11)	1
14	144.579.910	O-Ring, R6 a (package of 10)	1
15	909.420.220	Seal, cover	1
16	046.270.924	Cover	1
17	933.151.277	Screw, CHc 6 x 20, Male	4
18	906.333.102	Plug, G 1/4"	1
19	046.170.510	Lever, control	1
*	146.270.950	Package of seals (Ind. 6, 12, 14, 15)	1

* preceding the index number denotes a suggested spare part.
N S S : denotes parts are not serviceable separately.

