

# EOS 10-C18 Airmix® pump + Xcite™ Airmix® Spray Gun Outfits

The AIRMIX® pump EOS 10-C18 compact design range is the ideal partner of your AIRMIX® Xcite™ spray gun, providing exceptional Performances (quality of finish, high transfer efficiency).



More products?



- **Efficiency: perfect for AIRMIX® finish**
- **Optimization: built with minimal parts**
- **Simplicity: lowest cost of ownership**

#### MATERIEL HANDLED

One component or two component solvent or water-based materials, varnishes, lacquers, polyurethanes, stains.

#### CUSTOMER BENEFITS

- ▶ Ultimate pump control: Slow movement during pump priming at very low air pressure (0.6 bar)
- ▶ Constant delivery and pulse free for superior finish
- ▶ Easy flushing and less wastage (< 0.5l)
- ▶ Fast color changes

## EOS TECHNOLOGY

EOS is based on 80 years of KREMLIN REXSON technical expertise, innovation and dedication to our customers. The EOS pump range articulates around 3 strong themes: Efficiency, Optimization and Simplicity. The EOS 10-C18 compact design range is the ideal partner of your AIRMIX® Xcite™ spray gun, providing exceptional Performances (quality of finish, high transfer efficiency). It is recommended to handle all types of materials, ranging from medium to low viscosity.

The EOS 10-C18 pump kits or «ready to spray» outfits, available either stand or wall-mounted, come complete with one Xcite™ 120 AIRMIX® gun equipped or not with a 06.094 tip size and 7,5 m fluid and air hoses. A large choice of accessories is available to meet all customer needs.

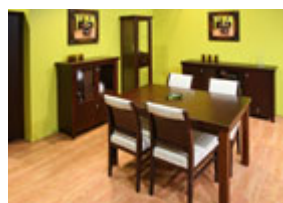
## RECOMMENDED MARKETS



**Machine tools**



**Kitchen & bathrooms**



**Furniture**



**Rolling Equipment**

### Increased productivity (1)

The VX 24 AIRMIX® aircap with «EZ adjust» function allows precise positioning of the aircap (easy to use).

### Accommodates all types of products (2)

Easy to move and available in several configurations

### Ultra compact and lightweight

Easy to move and available in several configurations

### Differential air motor (3)

- No external air distributor 45% less part vs competitors
- 20 years of experience on component reliability

### Closed construction (4)

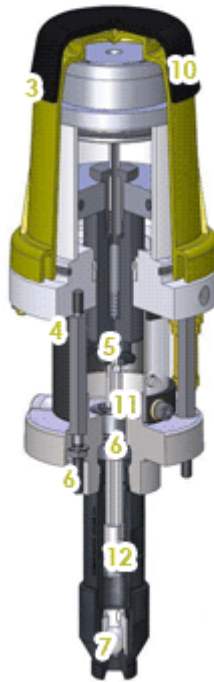
- No risk of injuries
- Protect lubricant from external contamination

### Easy coupling (5)

Quick disassembling

### Stainless steel construction (6)

50% less parts vs competitors  
Compatible with water-based products (triple chrome-plated wetted parts)



### Superior atomization quality (1)

VX24 AIRMIX® aircap and reliable design

### Stainless steel construction (6)

50% less parts vs competitors  
Compatible with water-based products (triple chrome-plated wetted parts)

### Large foot valve (7)

To handle a large range of materials

### Ideal for spraying complex shape parts (8)

Accurate fan width adjusting knob

### Very comfortable grip and use (9)

Lighter gun and redesigned handle

### Optimized air motor (10)

- Works perfectly with an air compressor of only 0,5 HP
- Low noise level

### Single qt seal (11)

- No throat packing maintenance
- Low friction
- Large lubricant wet cup

### Easy flushing (13)

- No throat packing maintenance
- Low friction
- Large lubricant wet cup

## DOWNLOAD OUR LEAFLETS



**EOS 10-C18 Airmix® pump  
+ Xcite™ Airmix® Spray  
Gun Outfits**



**Furniture**



**Kitchen and bathroom**